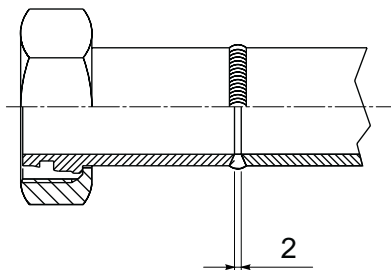
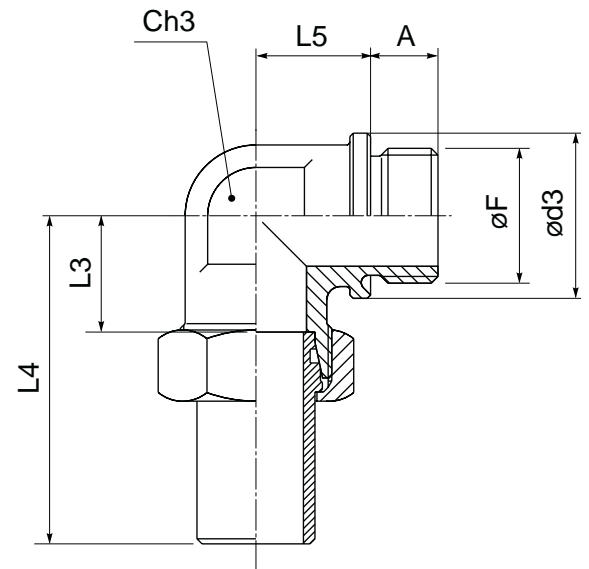


RUPTURE VALVE "VC 3006/G"



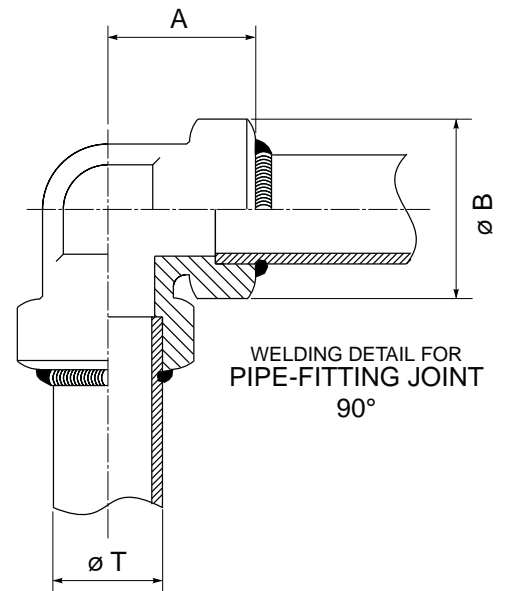
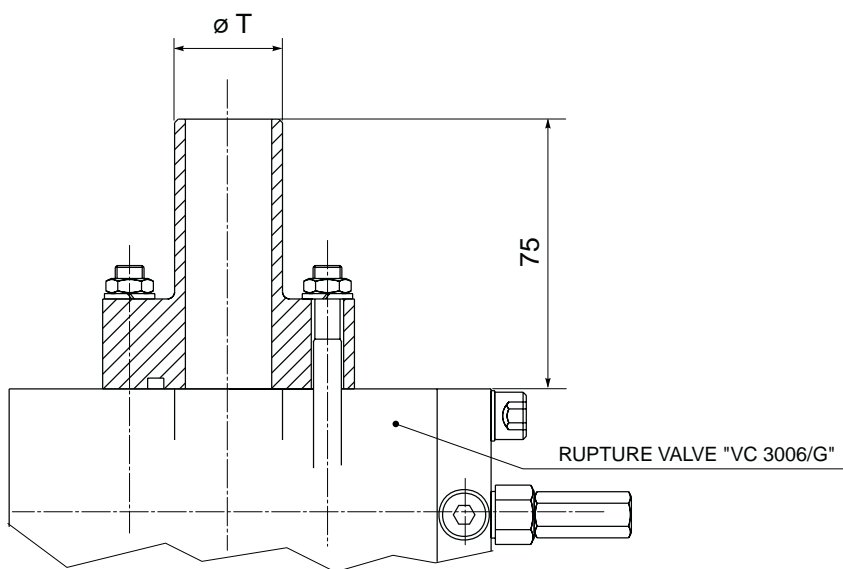
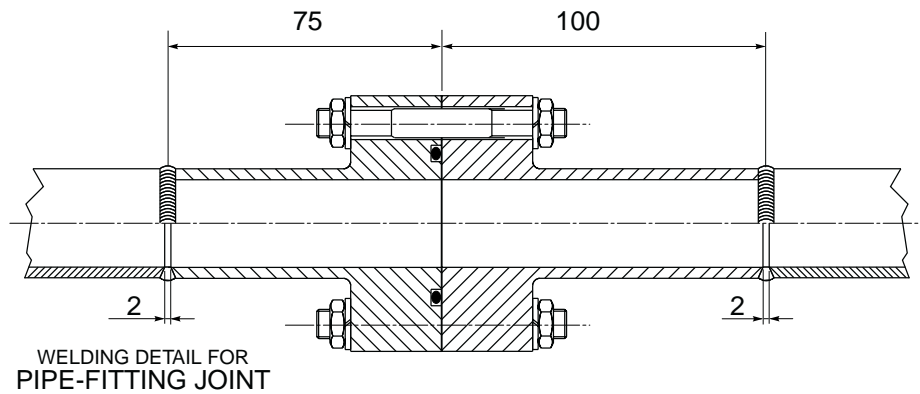
WELDING DETAIL FOR PIPE-FITTING JOINT



FITTING SIZE	dimension [mm]												M	øF
	A	ød3	øT	S	L1	L2	L3	L4	L5	Ch1	Ch2	Ch3		
30 S	20	49	30	3	84,5	23,5	35,5	96,5	34	50	50	41	M 42x2	G 1" 1/4
38 S	22	55	38	4	96	26	41	111	39	55	60	50	M 52x2	G 1" 1/2

- pipe fitting are forged steel with plated finish (anti-corrosion)
- maximum working pressure 400 bars (30 S) and 315 bar (38 S)
- normalized in accordance with DIN 2353

For data not included in this data sheet please contact GMV



FITTING SIZE	dimension[mm]			
	A	B	$\varnothing T$	Use
42 S	47	49	42	1"1/2
60 S	60	55	60	2"

- pipe fitting are forged steel with plated finish (anti-corrosion)
- maximum working pressure 400
- normalized in accordance with DIN 2353

For data not included in this data sheet please contact GMV