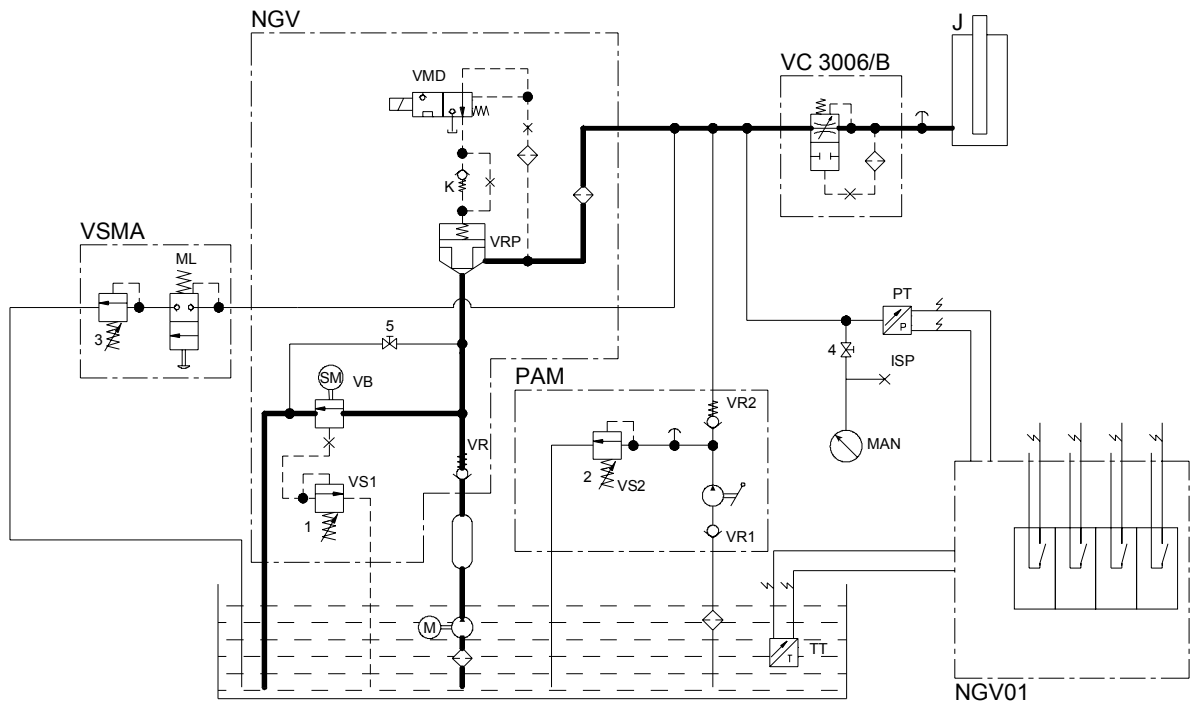


| | | | |
|--------------|--|-----------------|-----------------------------------|
| 1 | Pressure safety valve adjustment | PT | Pressure transducer |
| 2 | Pressure safety valve adjustment (Hand pump) | SI | Inductive sensor |
| 3 | Ram pressure adjustment (only indirect acting jacks 2:1) | SM | Stepping motor |
| 4 | Shut-off valve for inspection pressure gauge exclusion | TT | Temperature transducer |
| 5 | Shut-off valve for rupture valve test | UP | Upward |
| DN | Downward | V0,V1,V2 | Speed (high, medium, inspection) |
| ISP | Inspection gauge fitting | VB | Main flow adjustment valve |
| J | Jack | VC | Rupture valve |
| K | Non-return valve | VD | Downward signal |
| MAN | Pressure gauge | VMD | Downward solenoid valve |
| ML | Manual lowering button | VR | Non-return valve (flow) |
| M,MP | Motor / pump | VR1 | Non-return valve (inlet) |
| NGV | NGV valve | VR2 | Non-return valve (outlet) |
| NGV01 | NGV control card | VRP | Non-return valve - controlled |
| OFF | Not powered | VS | Upward signal |
| ON | Powered | VS1,VS2 | Overpressure valve |
| PAM | Hand pump | VSMA | Lowering valve: manual / electric |



For information not included in this data sheet please consult GMV