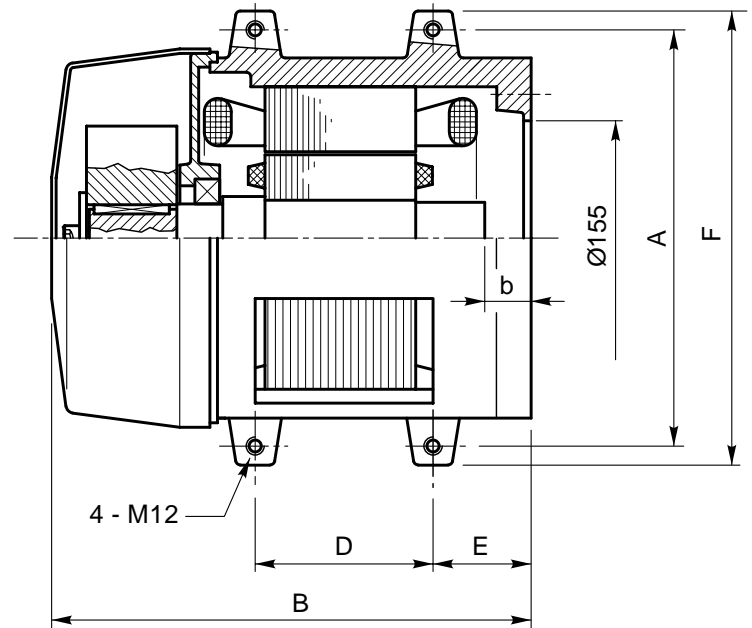
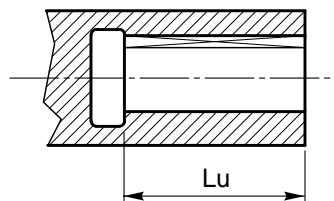
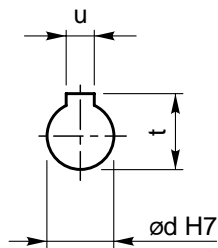


SHAFT DETAIL



MOTOR TYPE	POWER		A	B	D	E	øf	F	øG	øH	b	ød	t	u J9	Lu	wt. [kg]
	HP	kW														
MI-160 L	50	36,8	335	463	190	80	M12	365	M12	190	35	32	35,3	10	55	70
									M14	260		38	41,3	10	65	
MI-160 Sr	60	44,1	335	463	190	80	M12	365	M12	190	35	32	35,3	10	55	93
									M14	260		38	41,3	10	65	
MI-160 S	70	51,5	335	518	190	80	M12	365	M12	190	35	32	35,3	10	55	102
									M14	260		38	41,3	10	65	
MI-160 Lr	80	58,8	335	518	190	80	M12	365	M12	190	35	32	35,3	10	55	110
									M14	260		38	41,3	10	65	

For information not included in this data sheet please consult GMV

Three phase 2 poles motor type MI-160
(36,8 ÷ 58,8 kW - 50 Hz)

data sheet : 05.057 1/1
date : 02/03/2001

GMV