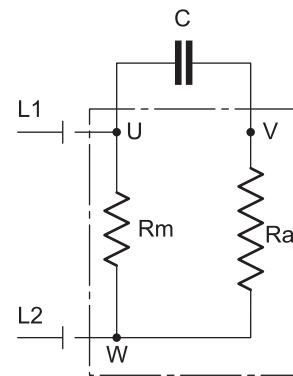
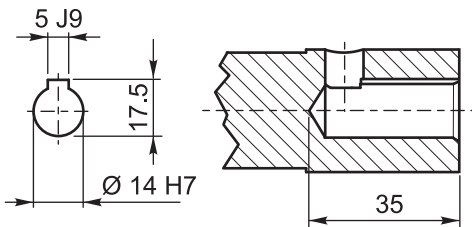


SHAFT DETAIL



$R_a > R_m$ [W]

WIRING DIAGRAM

50Hz	motor type	motor power		voltage	rated current	starting current	capacitor	cos φ	weight
		kW	HP	V	A		μF / V		kg
	HL 6000	1,5	2,0	230	16	52	50 / 450	0,92	11,50
	HL 6000	2,2	3,0	230	18	53	75 / 450	0,90	12,80

60Hz	motor type	motor power		voltage	rated current	starting current	capacitor	cos φ	weight
		kW	HP	V	A		μF / V		kg
	HL 6000	1,8	2,5	230	20	60	65 / 450	0,92	11,50
	HL 6000	2,6	3,5	230	24	64	75 / 450	0,92	12,80

For information not included in this data sheet please consult GMV

**Single phase motor 2 poles HL 6000
(1,5 ÷ 2,2 kW - 50 / 60 Hz)**

table :	05.068
date :	11/06/2003
revision :	D 06/06/2014
page :	1/1

